



Pain Management
Physiotherapy Service

Complex Regional Pain Syndrome (CRPS)

Information for you



Follow us on Twitter @NHSaaa



Find us on Facebook at www.facebook.com/nhsaaa



Visit our website: www.nhsaaa.net



All our publications are available in other formats



What is complex regional pain syndrome (CRPS)?

CRPS is a poorly understood condition that results in severe and persistent pain which can affect an arm or leg after an injury, such as a broken bone or minor sprain. In some cases it follows partial damage to a nerve in the limb. Only rarely are other areas of the body involved. It can affect people of all ages, including children.

Other names include: 'reflex sympathetic dystrophy (RSD)' or 'Sudeck's syndrome', and 'Causalgia'.

What is it like to have CRPS?

CRPS pain continues after the original injury has healed. It is often severe.

The main symptom is pain in the arm or leg. The pain is often burning, sharp, stabbing or stinging, with tingling and numbness. There are a range of other symptoms which can change over time. The skin may become oversensitive to



light touch. Clothes brushing the skin or even air blowing on the skin may be felt as severe pain. This unusual sensitivity is called 'allodynia' and is common in CRPS.

Other symptoms include skin colour change, swelling, stiffness, feelings of hot or cold, less or more sweating and changes to the hair, skin or nails. The pain and other symptoms often spread beyond the site of the original injury. For example, if you hurt a finger it can affect the whole of the hand or forearm.

Often there is difficulty in moving the limb, together with weakness and sometimes shaking or jerking. Sometimes the muscles in the area can waste and the hand or foot can become twisted.

Many patients say that their limb 'feels strange'. It can feel as if it does not belong to the rest of the body and as if it is not your own limb. Sometimes the limb feels bigger or smaller than the opposite, normal limb.

Some patients have frequent thoughts about wishing to cut off the limb. Unfortunately even surgical amputation does not help the pain (actually, it may make it worse). In extreme pain, some people may consider suicide. If you do feel like this, please see your doctor immediately.

What causes CRPS?

CRPS is a stronger-than-normal reaction of the body to injury. We don't know what causes CRPS. What we do know is that the abnormal reaction to injury happens both in the affected limb and in the brain. The nerves in the affected limb are much more sensitive than other nerves and this causes some of the tenderness to touch and pressure. The brain is also involved. The way the brain communicates with the affected limb often changes and this can cause some of the problems with movement.

CRPS is not in your mind. We also know that your mindset cannot cause CRPS, but that some psychological factors such as fear or worry can make the pain worse than it already is.

Does CRPS run in families?

It may be that genes have something to do with who develops CRPS pain after injury, but they are certainly not the only factor in deciding who gets it. It is also very unlikely that anyone else in your family will ever develop CRPS pain.



Could it have been prevented?

It is very unlikely that CRPS pain after your injury could have been prevented. However, the right diagnosis and treatment can reduce suffering from CRPS pain.

Will it get better?

CRPS usually gets better by itself or with treatment. In some people, CRPS does not get better. We have no way of predicting whether your CRPS will get better and when.

Does treatment help?

Treatment aims to improve your quality of life, functioning with everyday activities and reduce pain. It is likely that you can get some pain relief with treatment. The success of some treatments depends on the amount of effort you put into them. There is a range of treatments and your consultant or therapist will discuss these with you.

Exercise treatment

Most patients see physiotherapists (PTs) or occupational therapists (OTs). These therapists will work with you in a way which is specially geared towards your CRPS. For example, they may not even touch your limb. It is very important to exercise the limb according to the advice from a physiotherapist or occupational therapist.

Medication treatment

Medication can sometimes reduce CRPS pain and may also help you to sleep. Your consultant will discuss the correct drug treatment with you. If appropriate, your consultant may also decide to offer you treatment in the form of an injection. In this case, we will give you additional information about this.

Psychological intervention

Sometimes we can refer you to a psychologist who can help to reduce distress (this does not mean that the pain is in your mind; it is not). Any health care professional would be happy to discuss this with you.

Are there any other treatments?

There may be other treatments, but these are not as well researched as the treatments mentioned in your patient information leaflets. Your consultant will discuss with you whether or not other treatments would be suitable in your case.

Sources of information for patients on the web

Arthritis Research UK

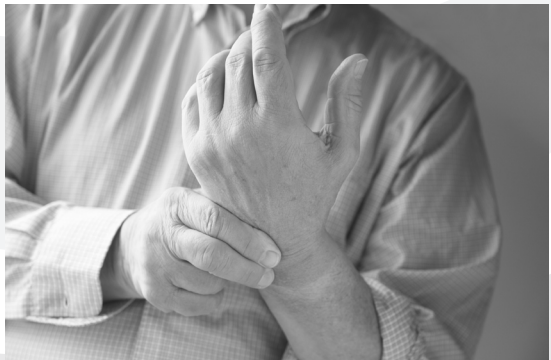
www.arthritisresearchuk.org/arthritis_information/arthritis_types_and_symptoms/complex_regional_pain_syndrome.aspx

Reflex Sympathetic Dystrophy Association (RSDSA)

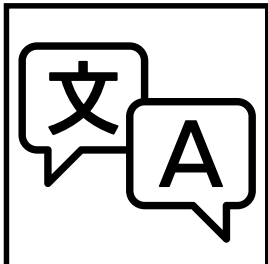
<http://rsds.org/>

CRPSUK

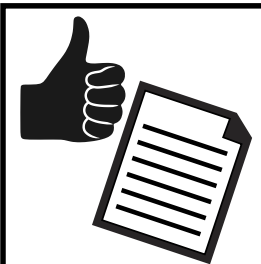
www.crpsuk.org



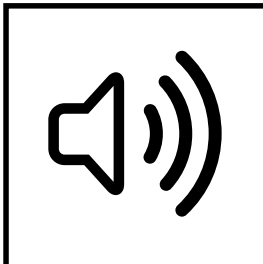
We are happy to consider requests for this publication in other languages or formats such as large print.



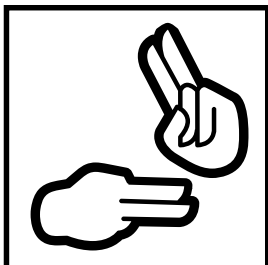
Translations



Easy to read



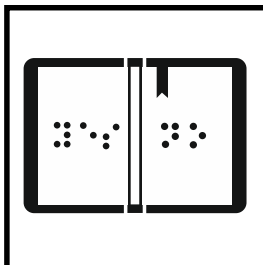
Audio



BSL



Large print



Braille



Call: 01563 825856



Email: pil@aapct.scot.nhs.uk



Tell us what you think...

If you would like to comment on any issued raised by this document, please complete this form and return it to our Feedback and Complaints team: PO Box 13, Eglinton House, Ailsa Hospital, Dalmellington Road, Ayr KA6 6AB.

Alternatively, you can call free on **0800 169 1441** or email **complaintsteam@aapct.scot.nhs.uk**

Name

Address

Comment
